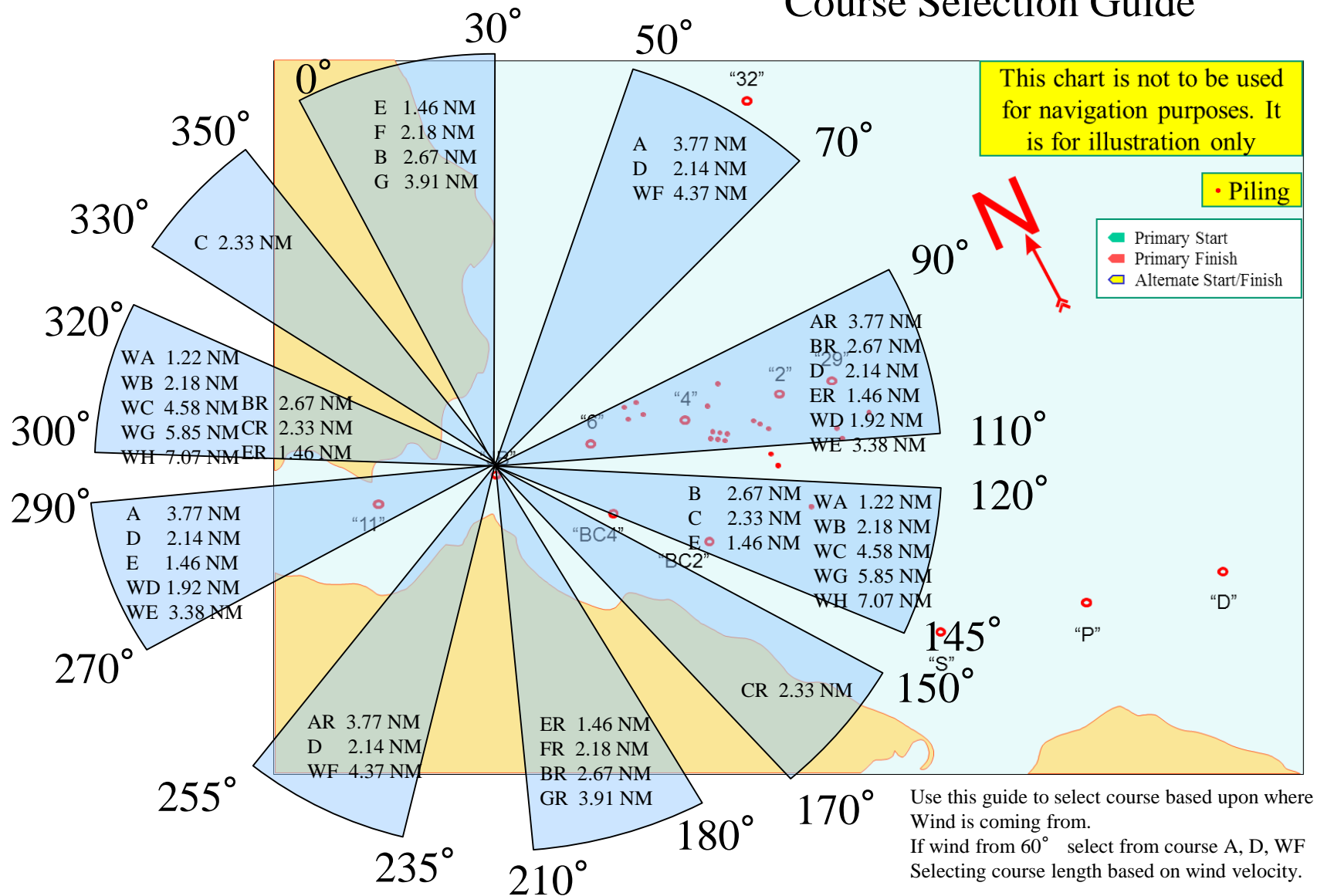
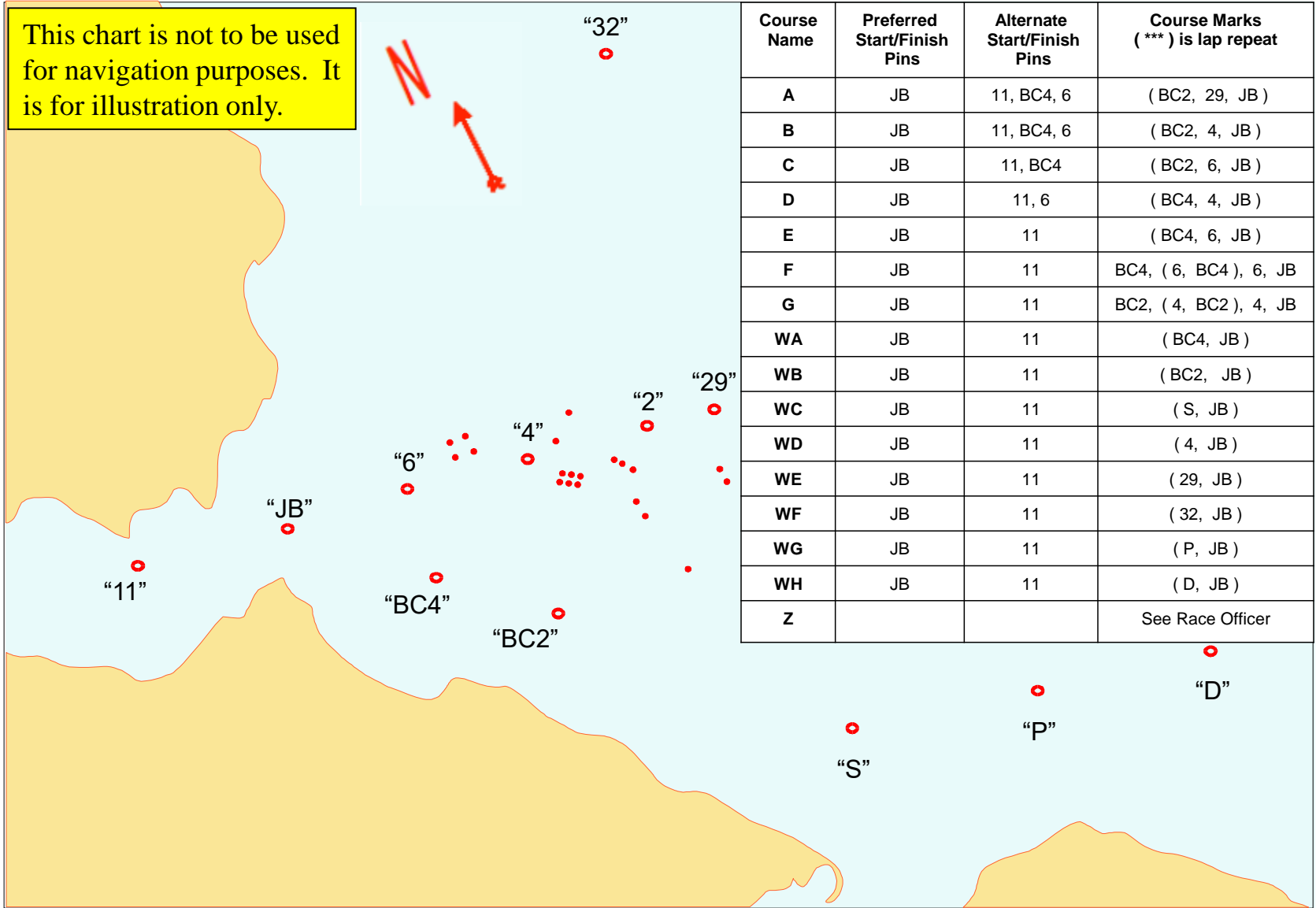


# Course Selection Guide

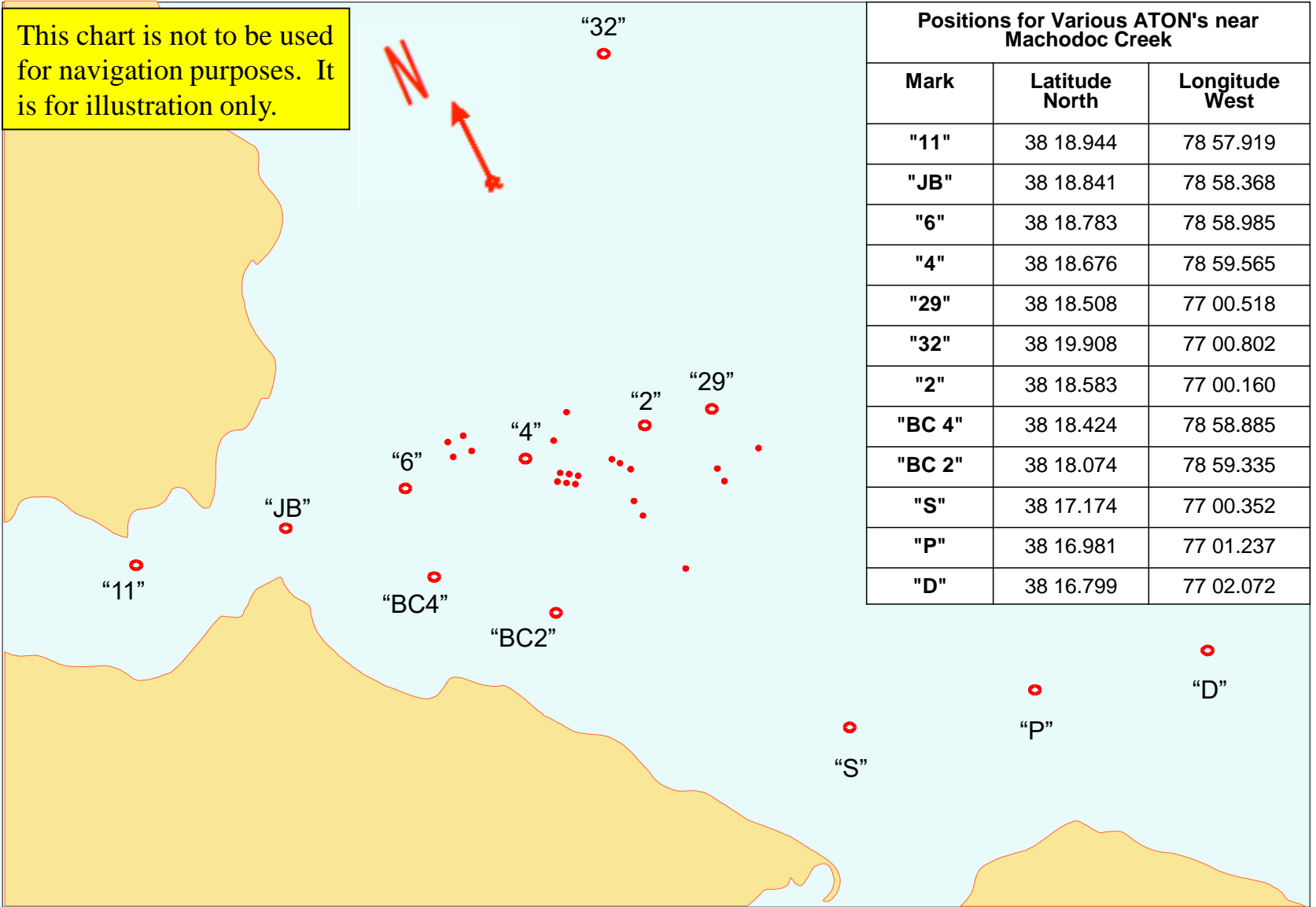


This chart is not to be used for navigation purposes. It is for illustration only.



Course Name	Preferred Start/Finish Pins	Alternate Start/Finish Pins	Course Marks ( ***) is lap repeat
A	JB	11, BC4, 6	( BC2, 29, JB )
B	JB	11, BC4, 6	( BC2, 4, JB )
C	JB	11, BC4	( BC2, 6, JB )
D	JB	11, 6	( BC4, 4, JB )
E	JB	11	( BC4, 6, JB )
F	JB	11	BC4, ( 6, BC4 ), 6, JB
G	JB	11	BC2, ( 4, BC2 ), 4, JB
WA	JB	11	( BC4, JB )
WB	JB	11	( BC2, JB )
WC	JB	11	( S, JB )
WD	JB	11	( 4, JB )
WE	JB	11	( 29, JB )
WF	JB	11	( 32, JB )
WG	JB	11	( P, JB )
WH	JB	11	( D, JB )
Z			See Race Officer

This chart is not to be used for navigation purposes. It is for illustration only.



**Distances Between ATON's Near Machodoc Creek (NM)**

	<b>11</b>	<b>JB</b>	<b>6</b>	<b>4</b>	<b>29</b>	<b>32</b>	<b>2</b>	<b>BC 4</b>	<b>BC 2</b>	<b>S</b>	<b>P</b>	<b>D</b>
<b>11</b>		0.37	0.85	1.32	2.07	2.46	1.80	0.92	1.41	2.60	3.26	3.90
<b>JB</b>	0.37		0.49	0.95	1.71	2.19	1.43	0.58	1.08	2.28	2.92	3.55
<b>6</b>	0.85	0.49		0.47	1.22	1.82	0.94	0.37	0.76	1.93	2.52	3.13
<b>4</b>	1.32	0.95	0.47		0.75	1.57	0.48	0.59	0.63	1.62	2.14	2.72
<b>29</b>	2.07	1.71	1.22	0.75		1.35	0.28	1.29	1.05	1.41	1.69	2.15
<b>32</b>	2.46	2.19	1.82	1.57	1.35		1.42	2.11	2.17	2.76	2.95	3.26
<b>2</b>	1.80	1.43	0.94	0.48	0.28	1.42		1.01	0.82	1.42	1.81	2.33
<b>BC 4</b>	0.92	0.58	0.37	0.59	1.29	2.11	1.01		0.50	1.70	2.34	2.98
<b>BC 2</b>	1.41	1.08	0.76	0.63	1.05	2.17	0.82	0.50		1.20	1.84	2.50
<b>S</b>	2.60	2.28	1.93	1.62	1.41	2.76	1.42	1.70	1.20		0.72	1.40
<b>P</b>	3.27	2.92	2.52	2.14	1.69	2.95	1.81	2.34	1.85	0.72		0.68
<b>D</b>	3.90	3.55	3.13	2.72	2.15	3.26	2.33	2.98	2.50	1.38	0.68	

## Bearing to ATON's Near Machodoc Creek (deg)

	To:											
From:	11	JB	6	4	29	32	2	BC 4	BC 2	S	P	D
11		106	101	102	100	067	102	124	128	133	127	123
JB	286		097	100	099	061	100	136	135	137	130	125
6	281	277		103	100	052	102	192	159	146	136	129
4	282	280	283		098	038	101	244	197	158	142	134
29	280	279	280	278		009	272	263	242	185	160	145
32	247	241	232	218	189		201	225	212	187	173	162
2	282	280	282	281	092	021		261	232	174	152	140
BC 4	304	316	012	065	083	045	081		135	137	128	123
BC 2	308	315	339	017	062	032	052	315		138	126	121
S	313	317	326	338	005	007	354	317	318		106	106
P	307	310	316	322	340	353	332	308	306	286		106
D	303	305	309	314	326	342	320	303	301	286	286	

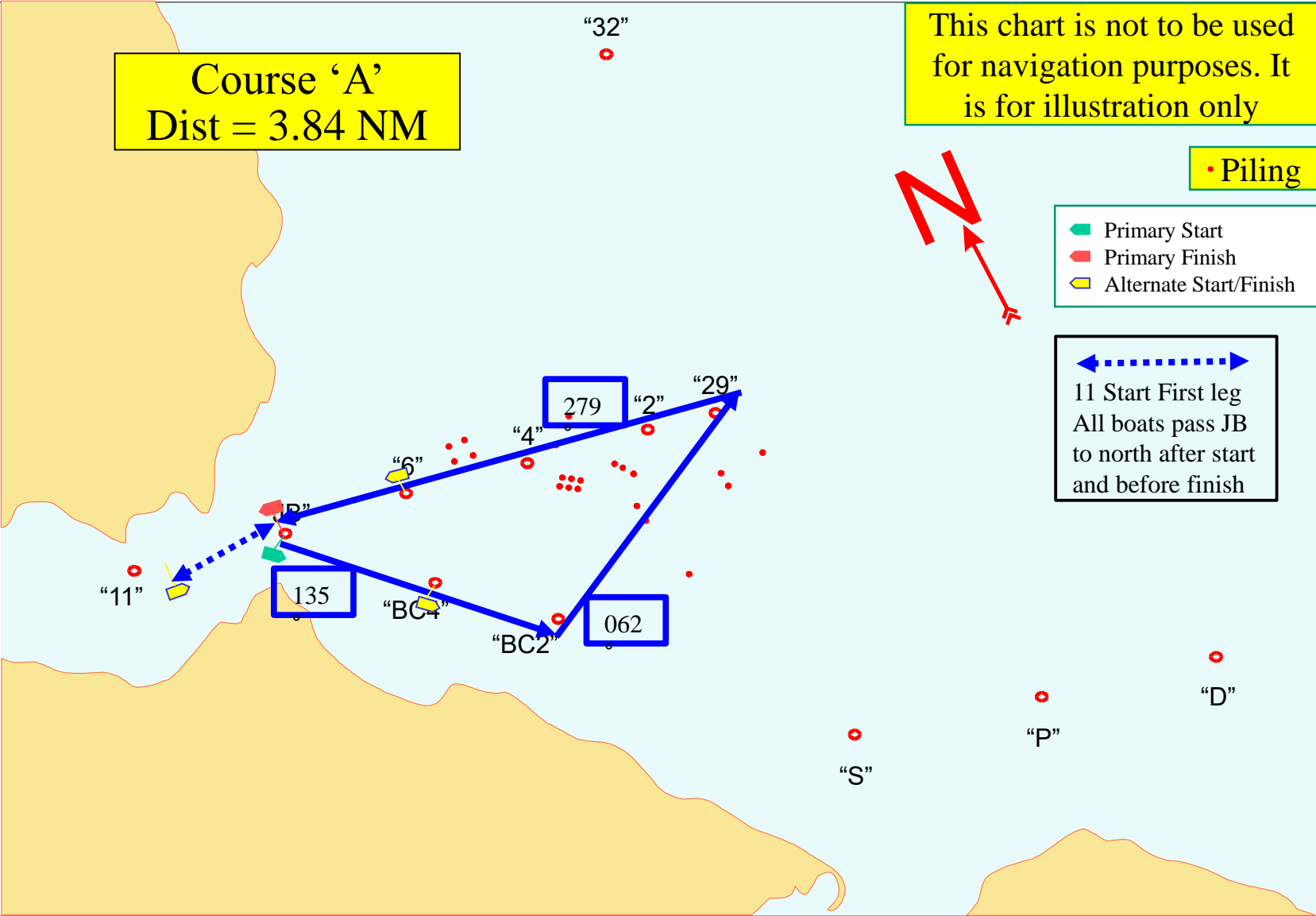
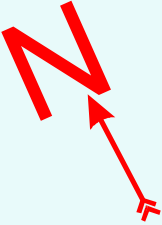
Course 'A'  
Dist = 3.84 NM

This chart is not to be used  
for navigation purposes. It  
is for illustration only

• Piling

- Primary Start
- Primary Finish
- Alternate Start/Finish

11 Start First leg  
All boats pass JB  
to north after start  
and before finish



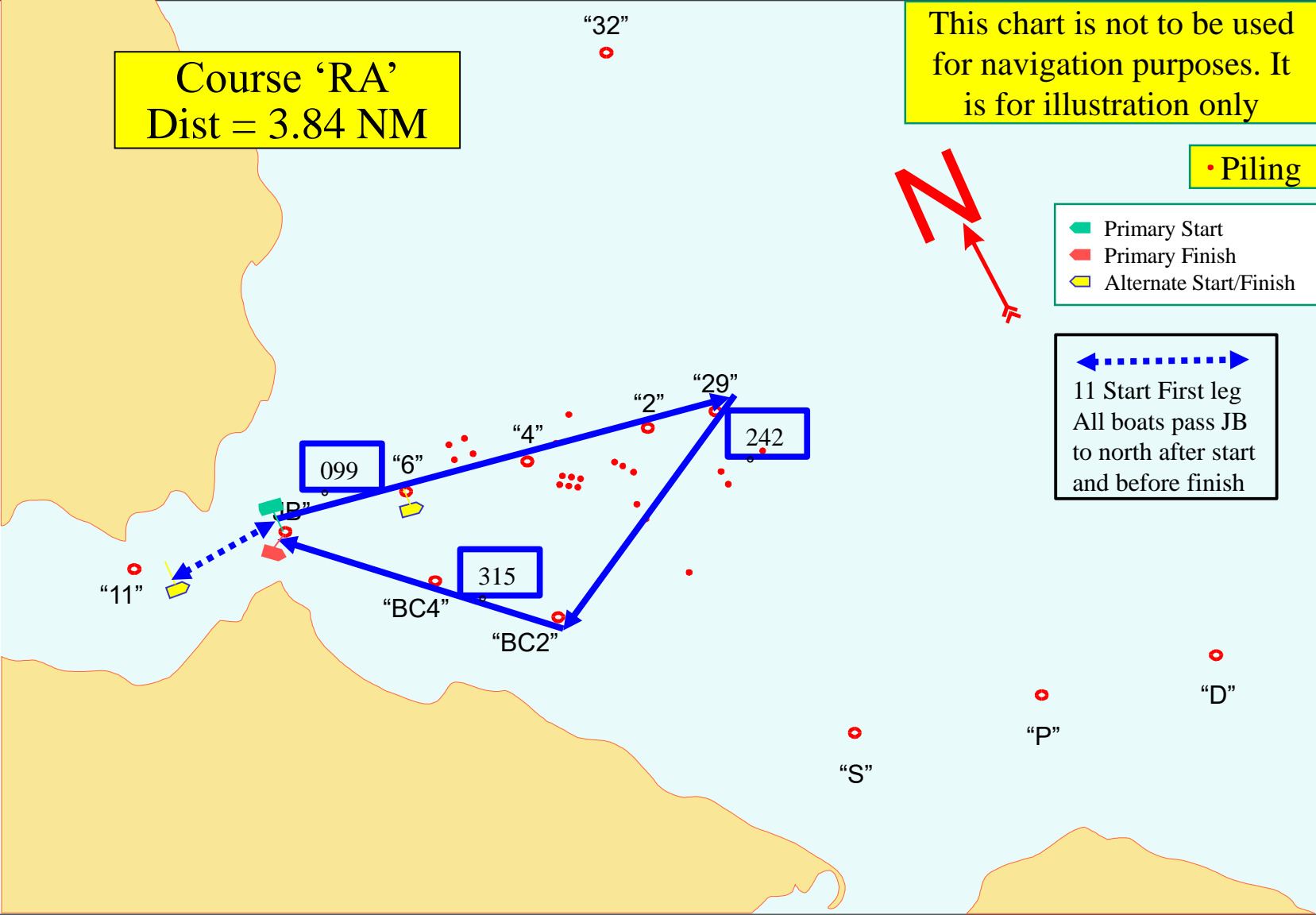
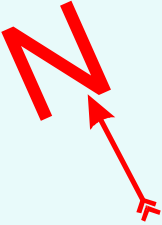
Course 'RA'  
Dist = 3.84 NM

This chart is not to be used  
for navigation purposes. It  
is for illustration only

• Piling

- Primary Start
- Primary Finish
- Alternate Start/Finish

11 Start First leg  
All boats pass JB  
to north after start  
and before finish



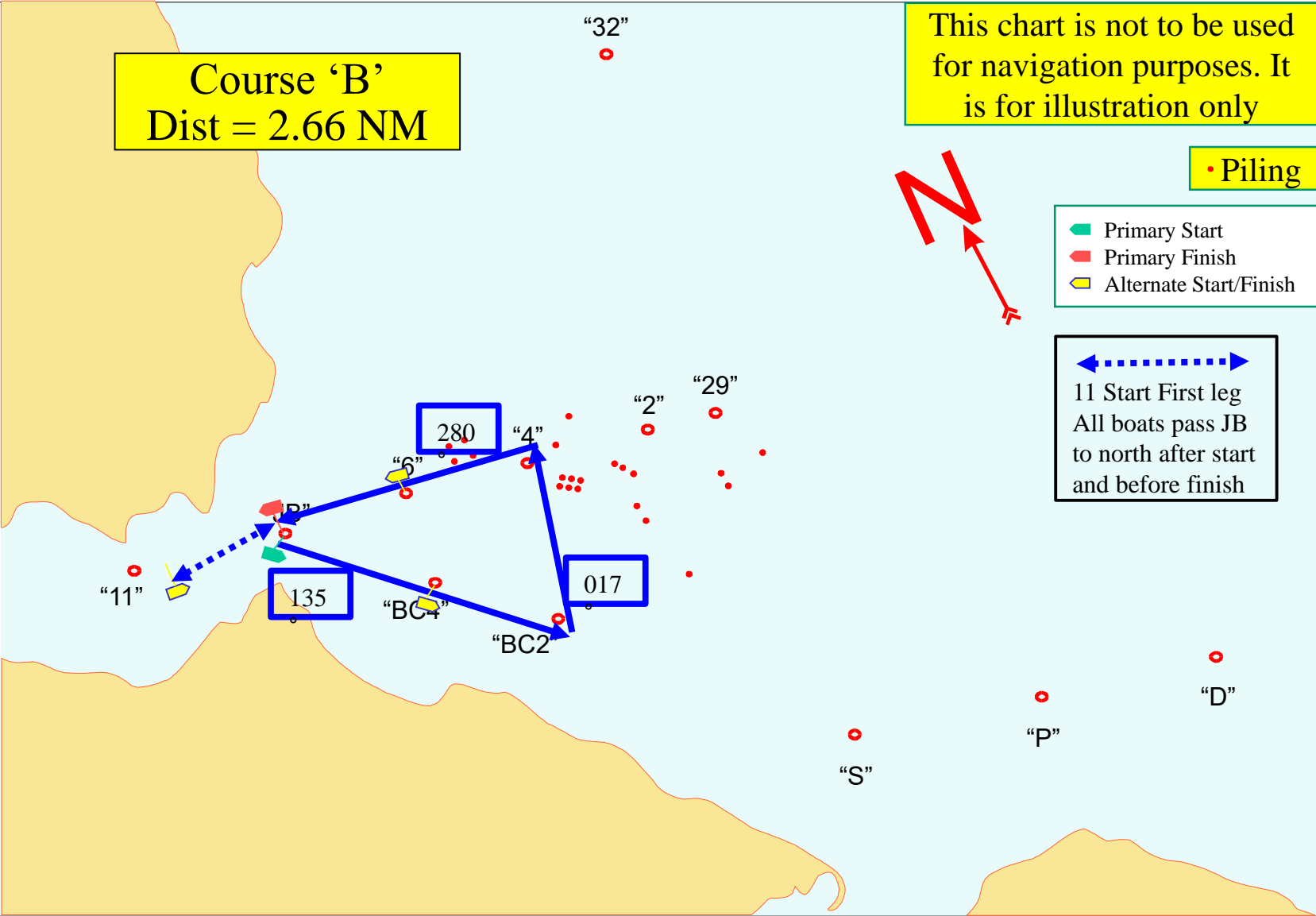
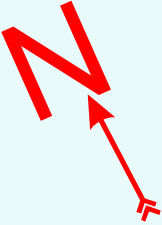
Course 'B'  
Dist = 2.66 NM

This chart is not to be used  
for navigation purposes. It  
is for illustration only

• Piling

- Primary Start
- Primary Finish
- Alternate Start/Finish

11 Start First leg  
All boats pass JB  
to north after start  
and before finish





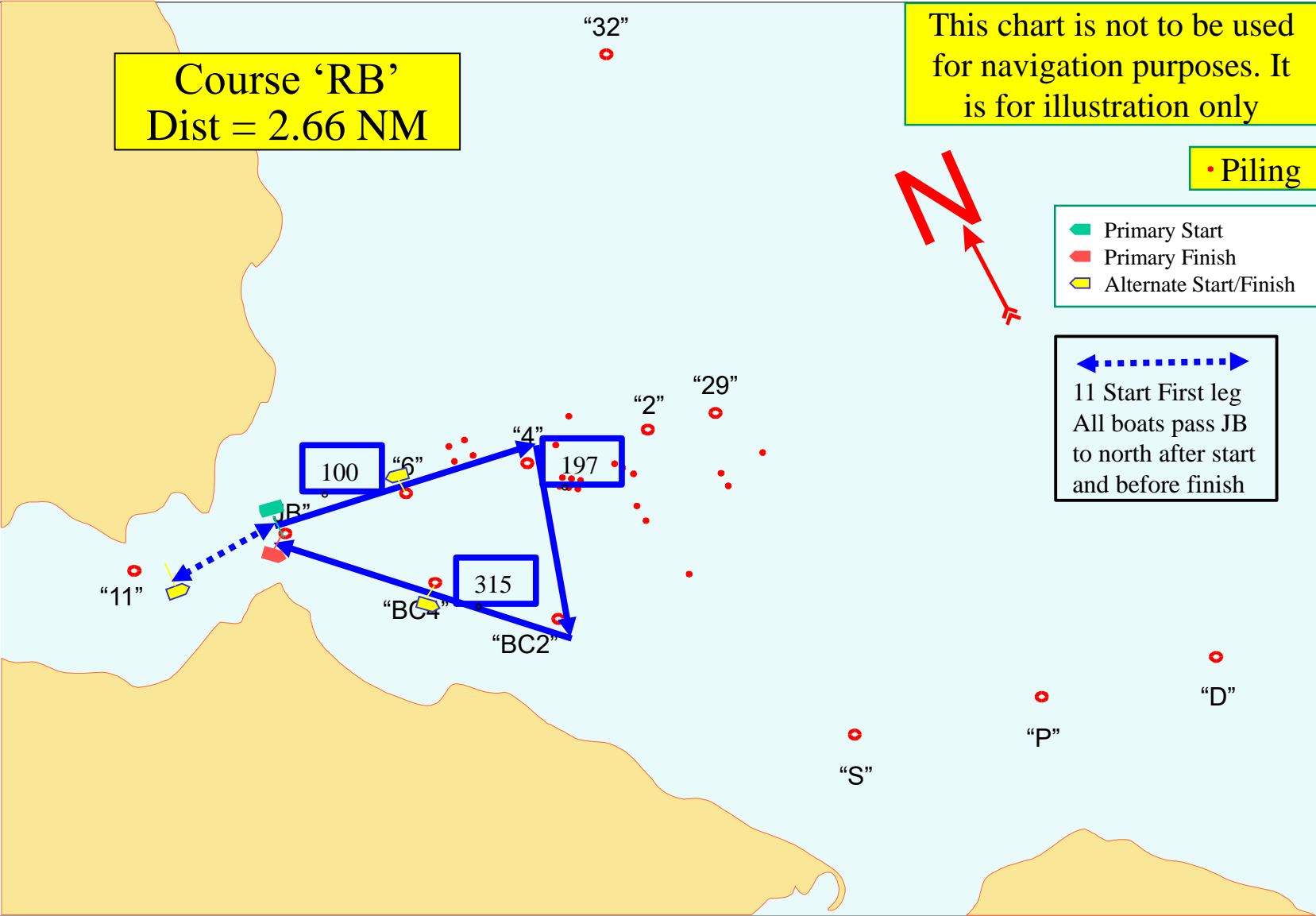
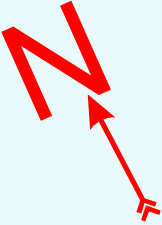
Course 'RB'  
Dist = 2.66 NM

This chart is not to be used  
for navigation purposes. It  
is for illustration only

• Piling

- Primary Start
- Primary Finish
- Alternate Start/Finish

11 Start First leg  
All boats pass JB  
to north after start  
and before finish



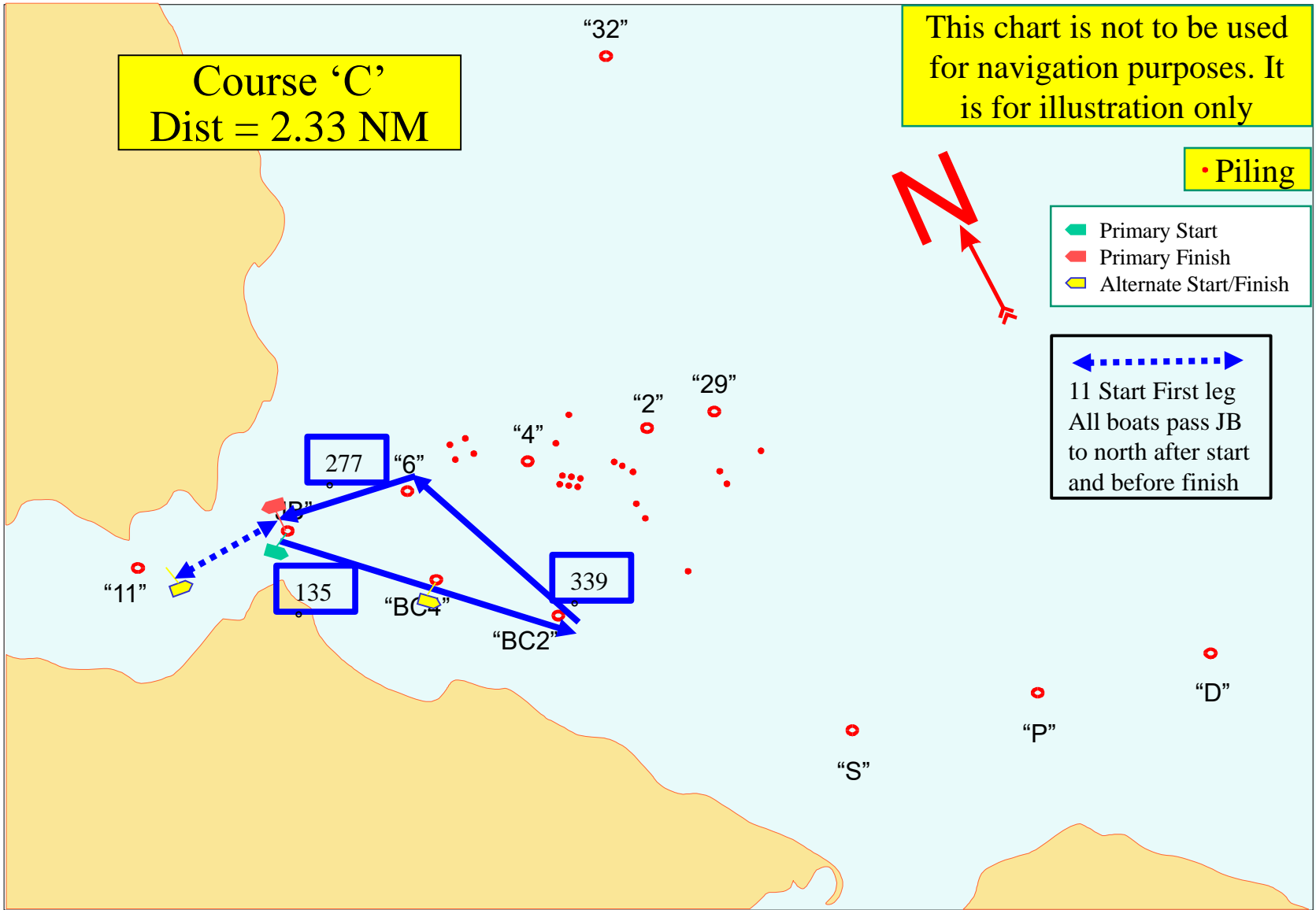
Course 'C'  
Dist = 2.33 NM

This chart is not to be used  
for navigation purposes. It  
is for illustration only

• Piling

- Primary Start
- Primary Finish
- Alternate Start/Finish

11 Start First leg  
All boats pass JB  
to north after start  
and before finish



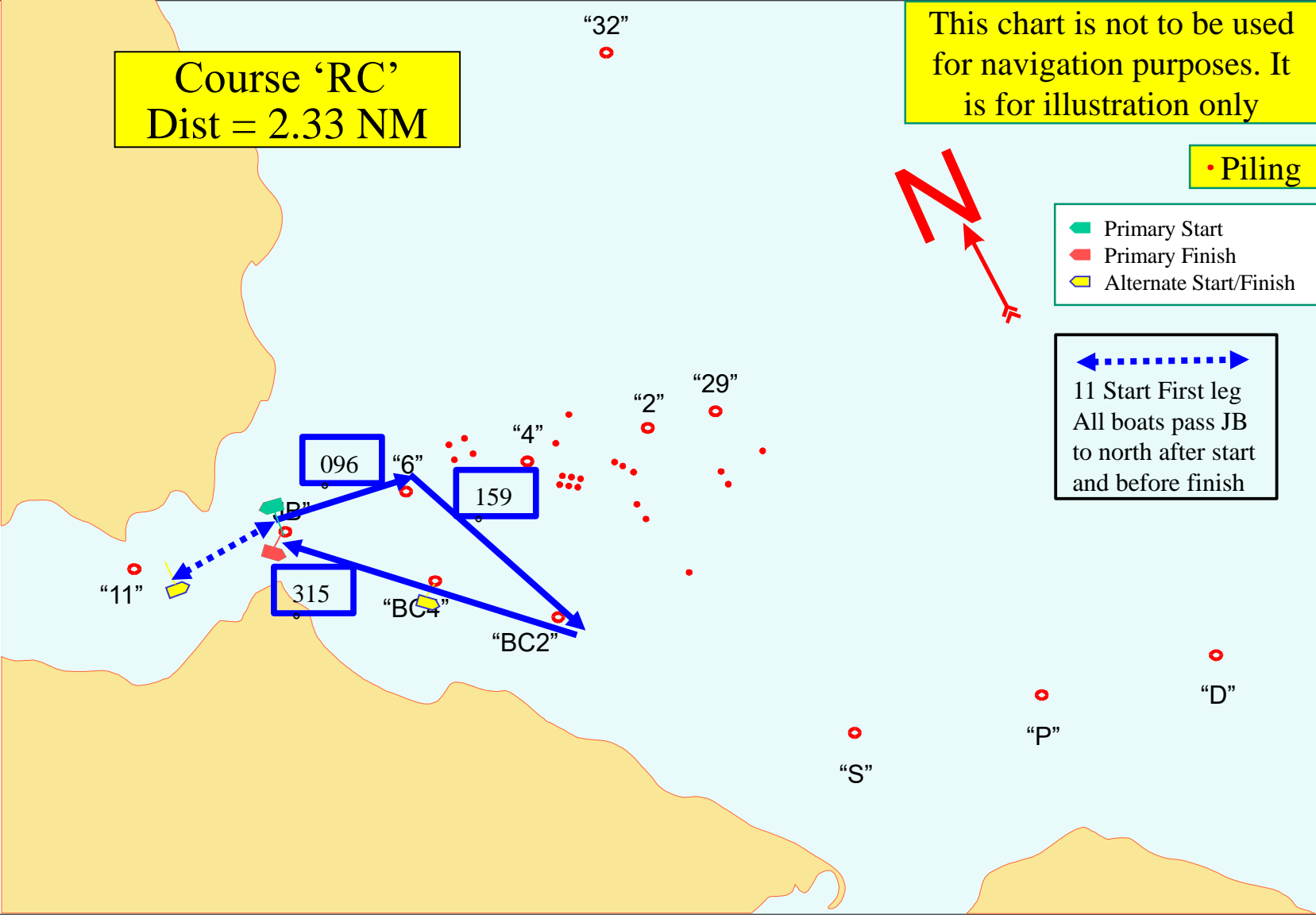
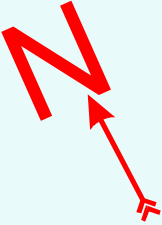
Course 'RC'  
Dist = 2.33 NM

This chart is not to be used  
for navigation purposes. It  
is for illustration only

• Piling

- Primary Start
- Primary Finish
- Alternate Start/Finish

11 Start First leg  
All boats pass JB  
to north after start  
and before finish



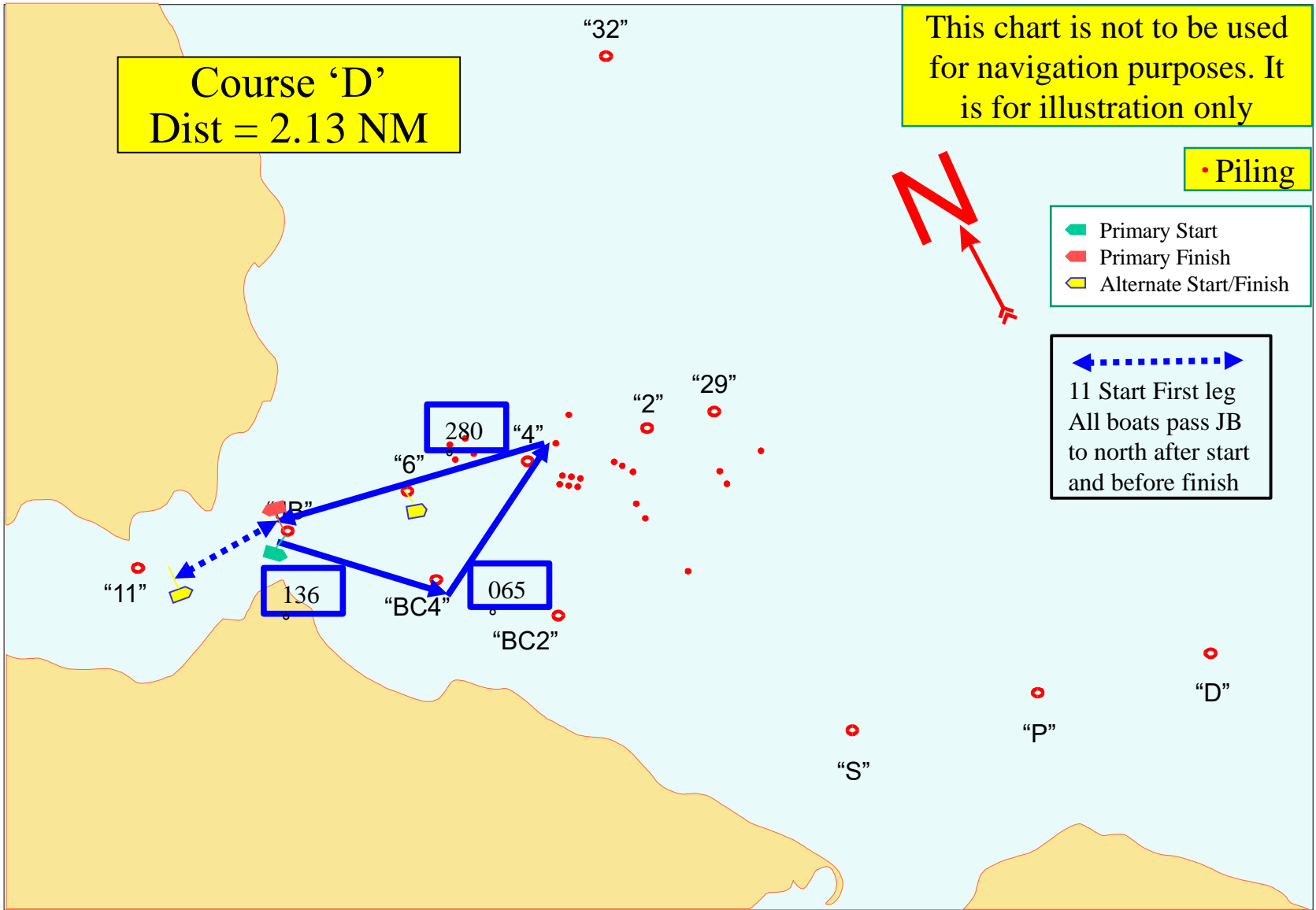
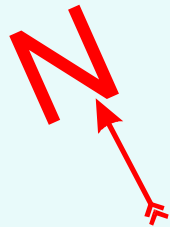
Course 'D'  
Dist = 2.13 NM

This chart is not to be used  
for navigation purposes. It  
is for illustration only

• Piling

- Primary Start
- Primary Finish
- Alternate Start/Finish

⬅️⋯⋯⋯➡️  
11 Start First leg  
All boats pass JB  
to north after start  
and before finish



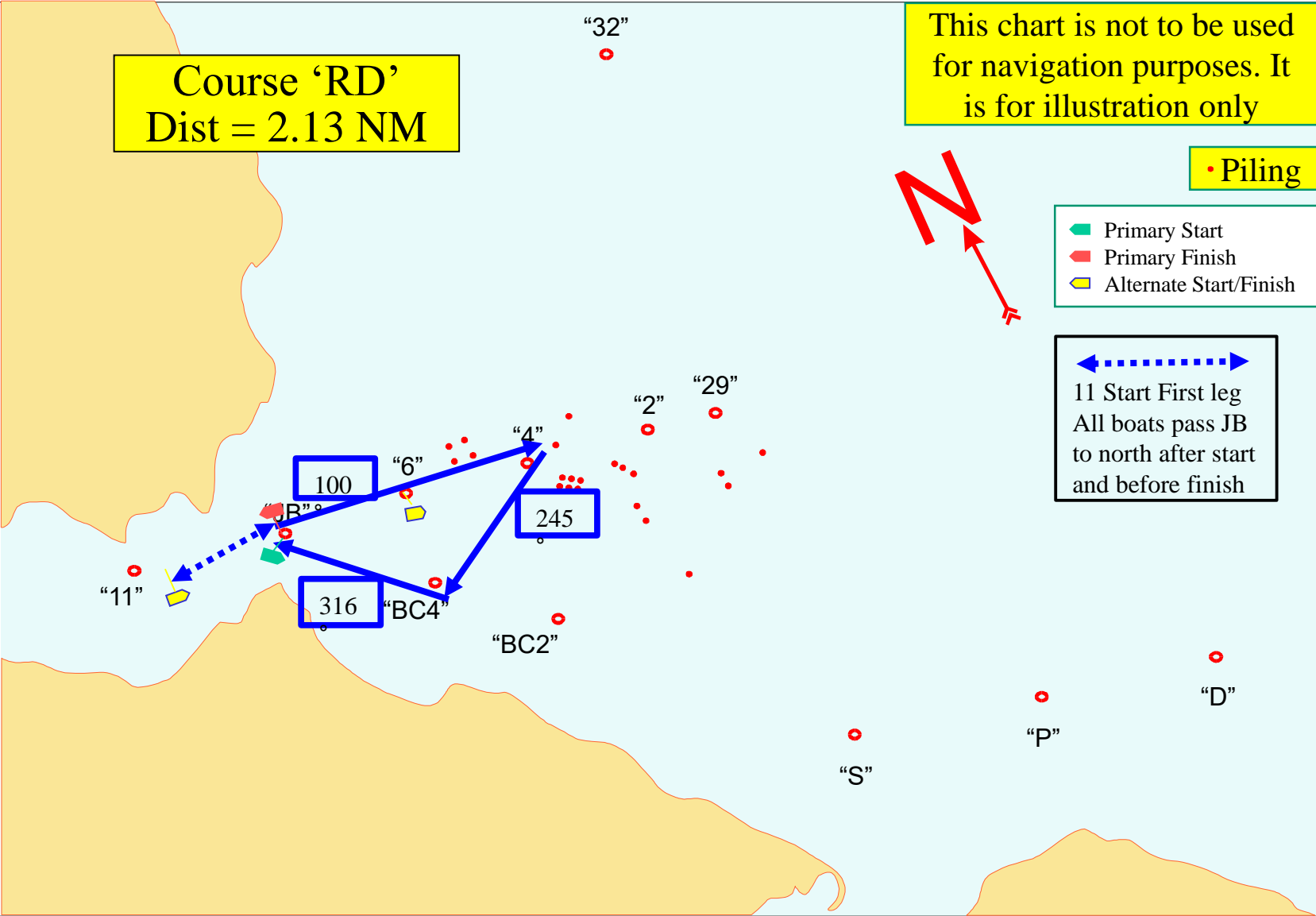
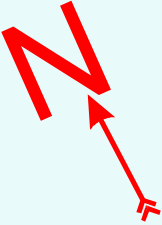
Course 'RD'  
Dist = 2.13 NM

This chart is not to be used  
for navigation purposes. It  
is for illustration only

• Piling

- Primary Start
- Primary Finish
- Alternate Start/Finish

11 Start First leg  
All boats pass JB  
to north after start  
and before finish



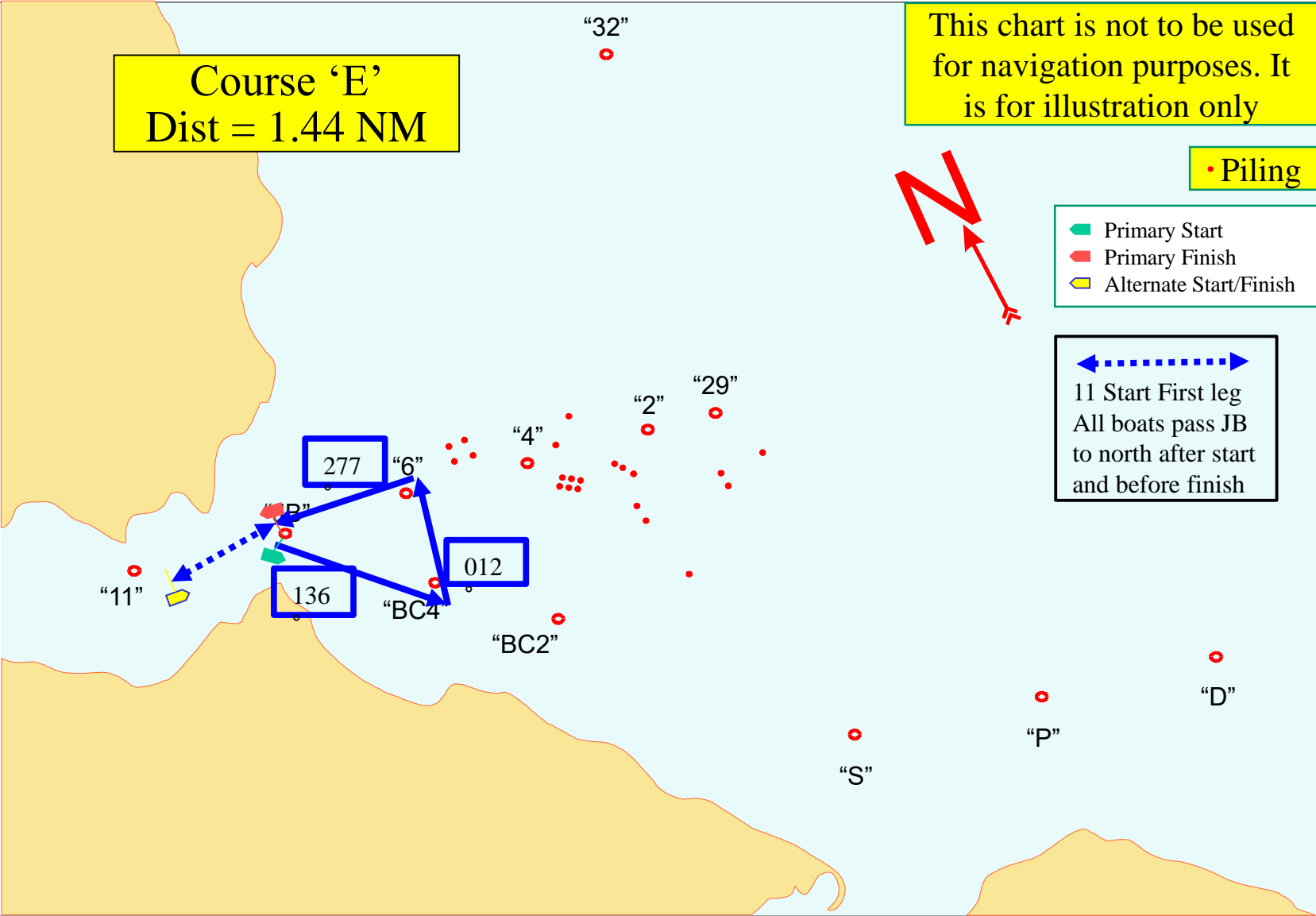
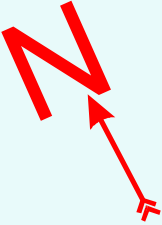
Course 'E'  
Dist = 1.44 NM

This chart is not to be used  
for navigation purposes. It  
is for illustration only

• Piling

- Primary Start
- Primary Finish
- Alternate Start/Finish

11 Start First leg  
All boats pass JB  
to north after start  
and before finish



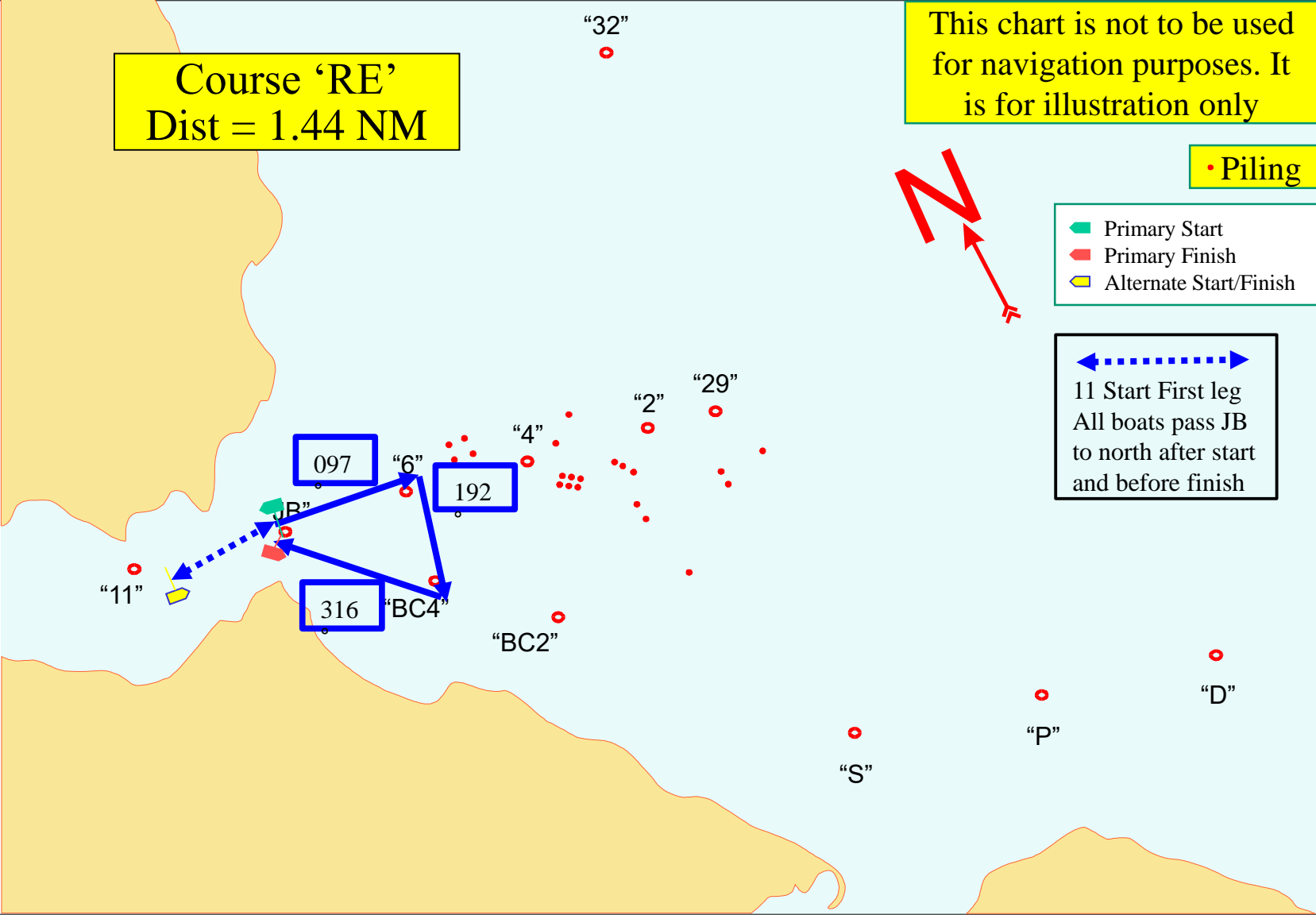
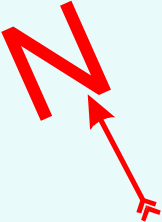
Course 'RE'  
Dist = 1.44 NM

This chart is not to be used  
for navigation purposes. It  
is for illustration only

• Piling

- Primary Start
- Primary Finish
- Alternate Start/Finish

11 Start First leg  
All boats pass JB  
to north after start  
and before finish



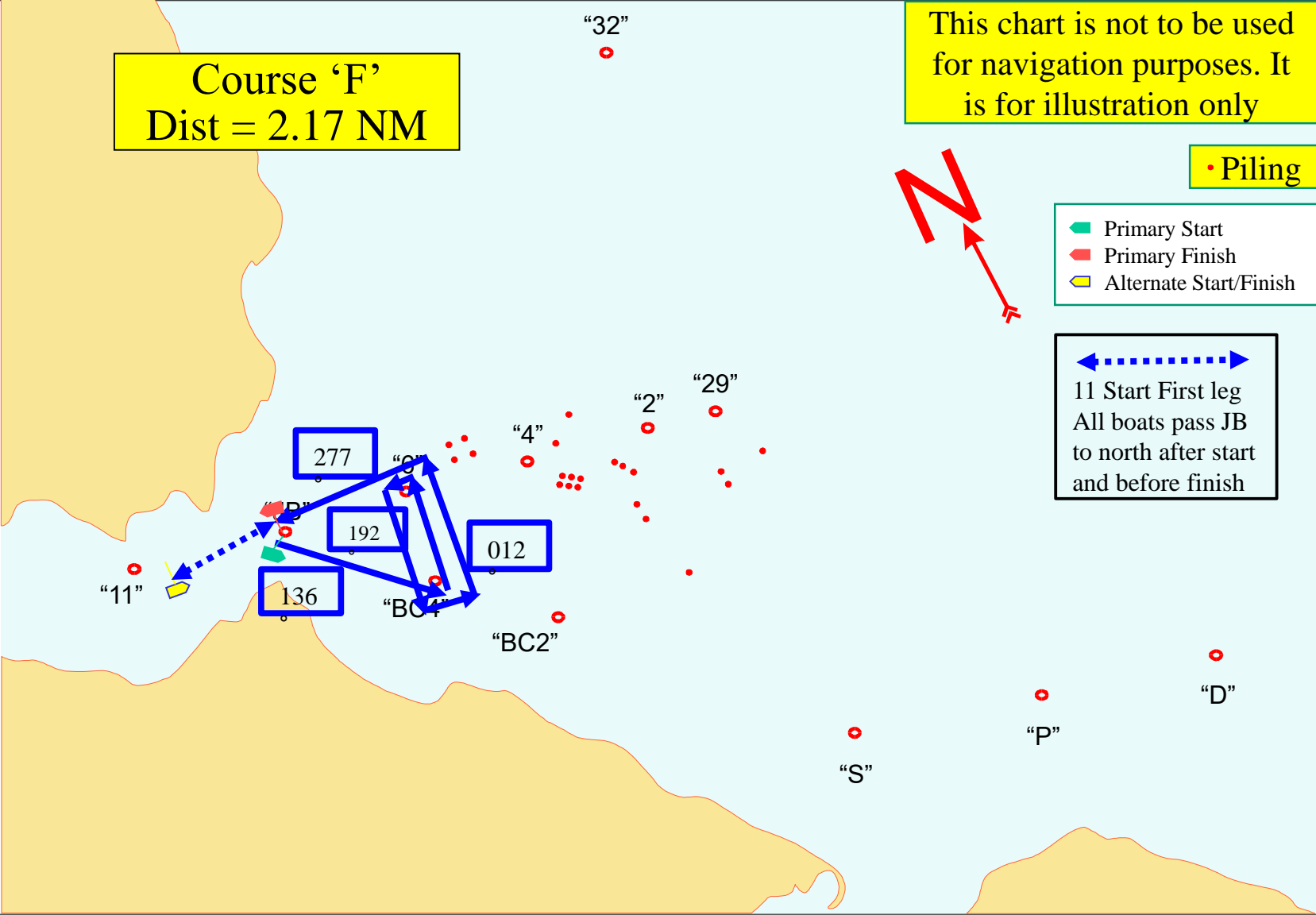
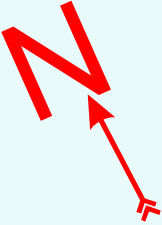
Course 'F'  
Dist = 2.17 NM

This chart is not to be used  
for navigation purposes. It  
is for illustration only

• Piling

- Primary Start
- Primary Finish
- Alternate Start/Finish

11 Start First leg  
All boats pass JB  
to north after start  
and before finish





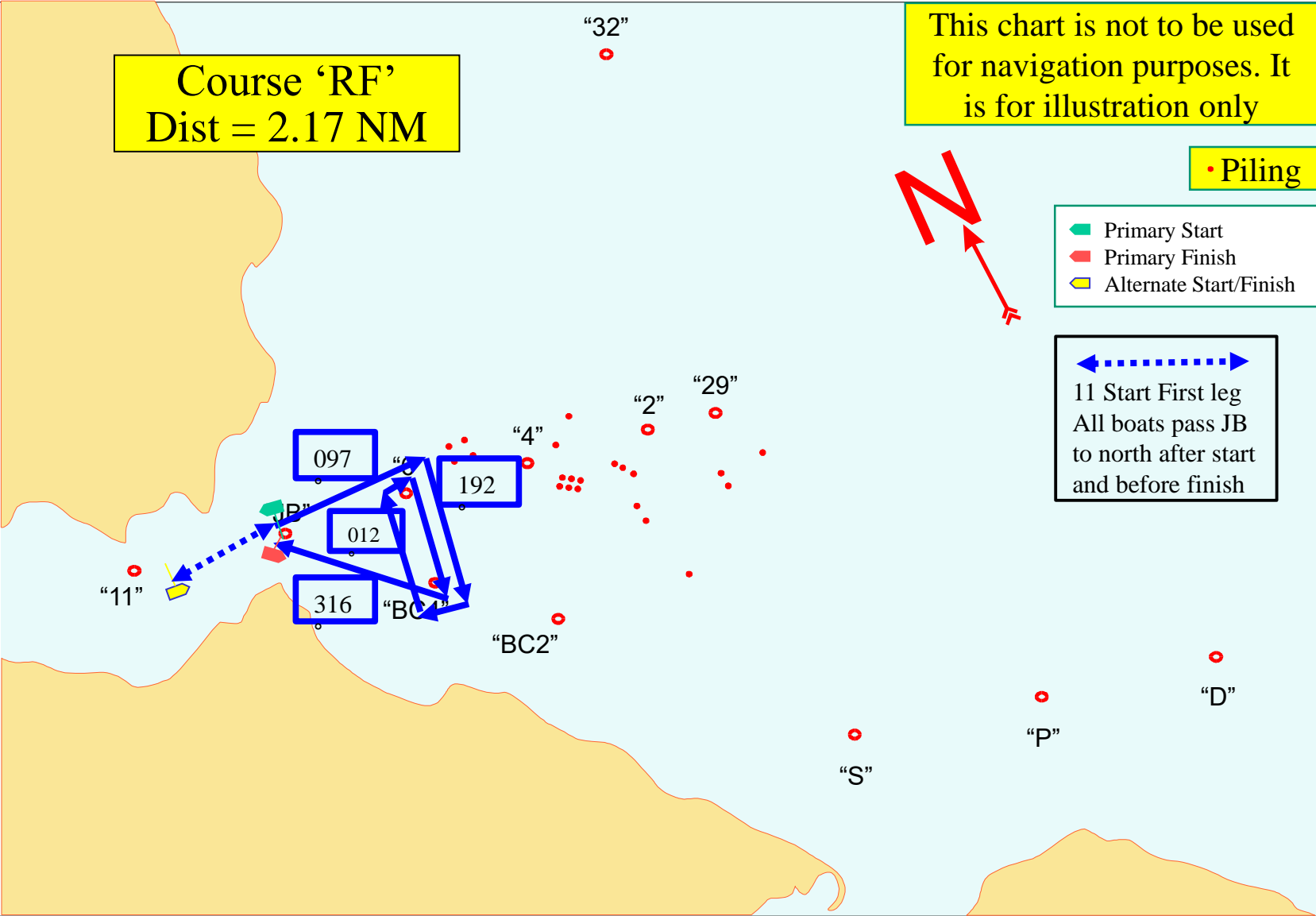
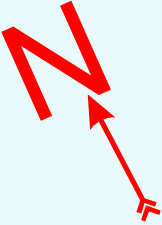
Course 'RF'  
Dist = 2.17 NM

This chart is not to be used  
for navigation purposes. It  
is for illustration only

• Piling

- Primary Start
- Primary Finish
- Alternate Start/Finish

11 Start First leg  
All boats pass JB  
to north after start  
and before finish



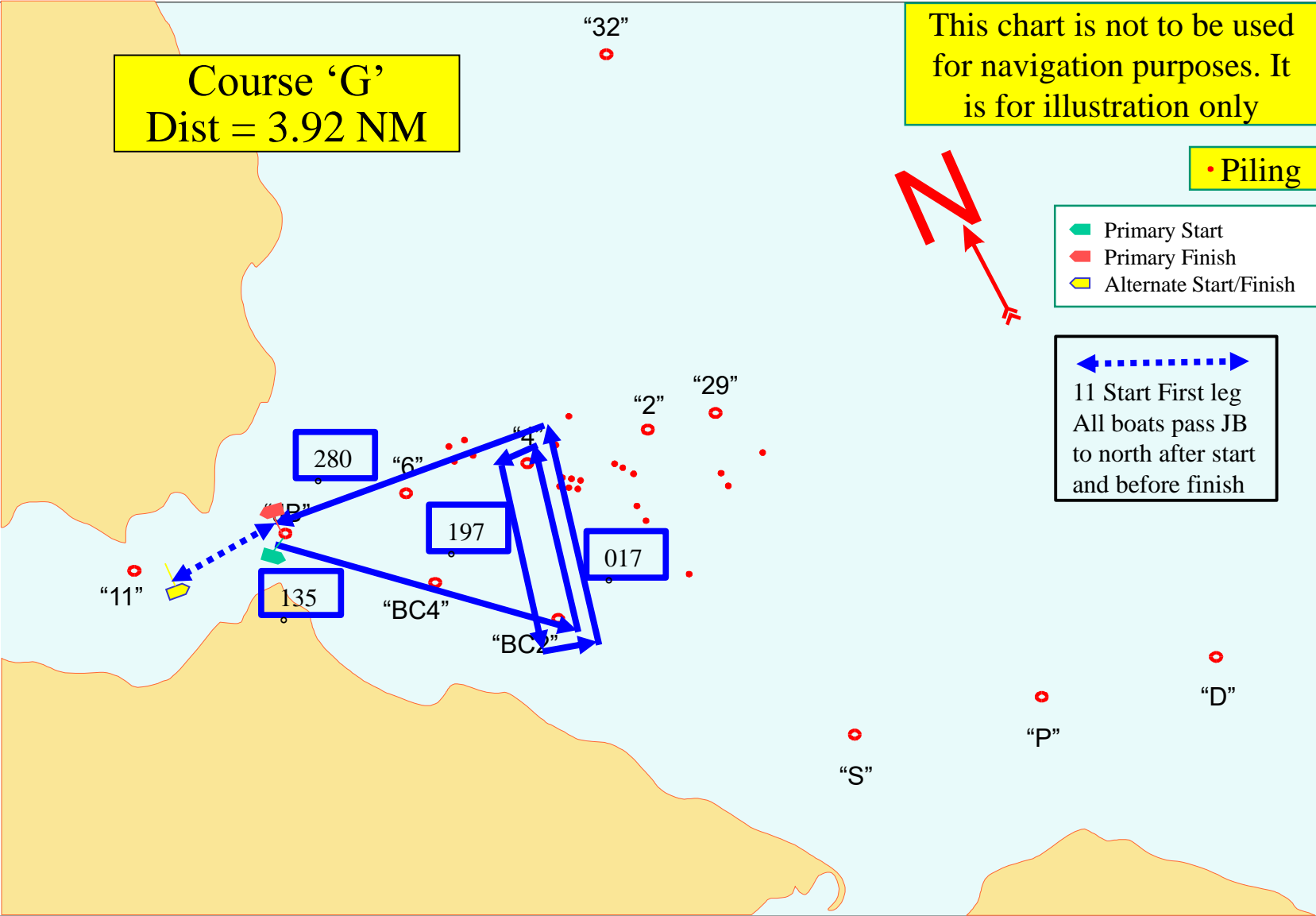
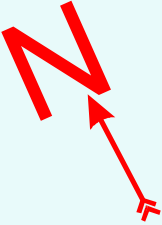
Course 'G'  
Dist = 3.92 NM

This chart is not to be used  
for navigation purposes. It  
is for illustration only

• Piling

- Primary Start
- Primary Finish
- Alternate Start/Finish

11 Start First leg  
All boats pass JB  
to north after start  
and before finish



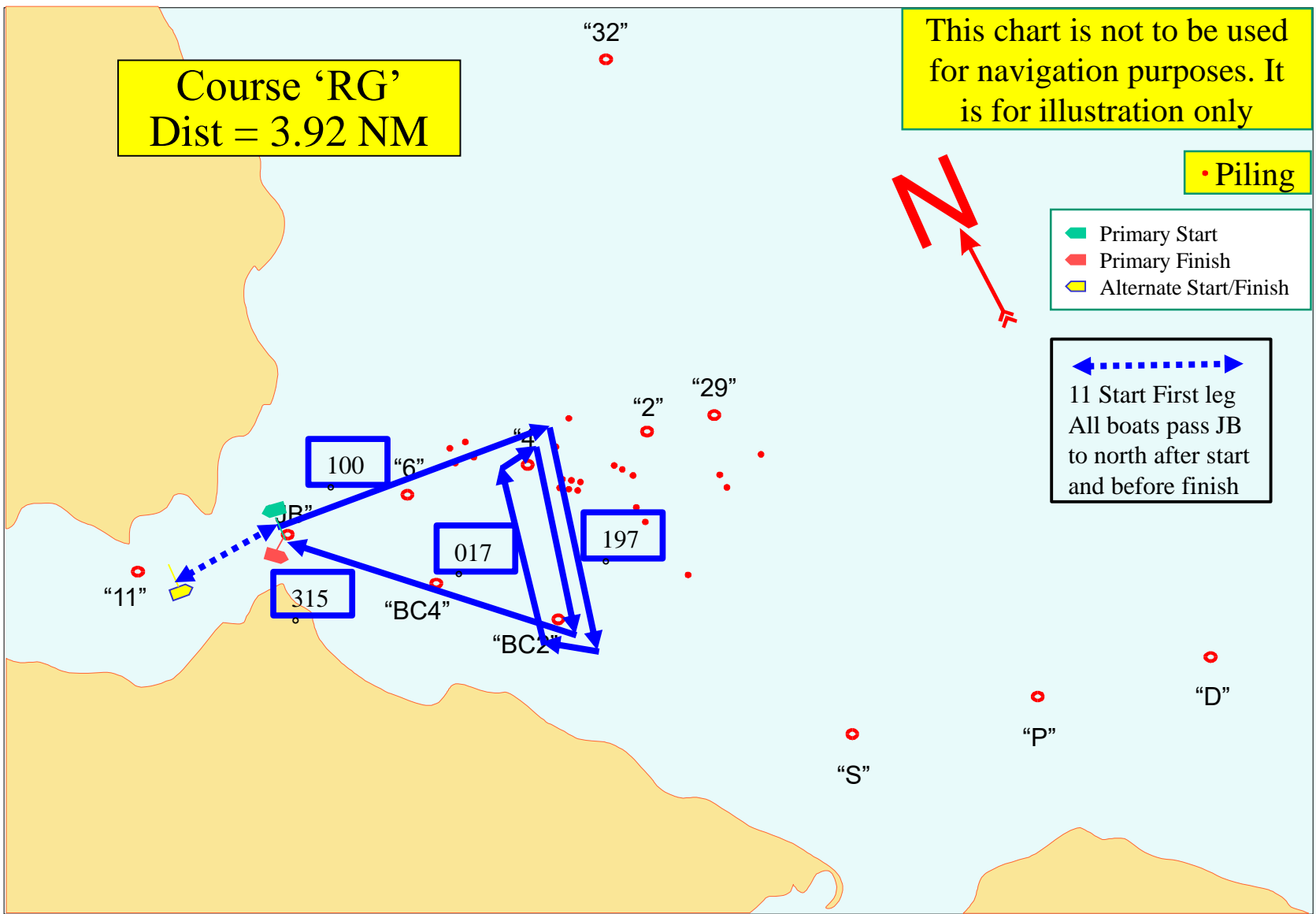
Course 'RG'  
Dist = 3.92 NM

This chart is not to be used  
for navigation purposes. It  
is for illustration only

• Piling

- Primary Start
- Primary Finish
- Alternate Start/Finish

11 Start First leg  
All boats pass JB  
to north after start  
and before finish



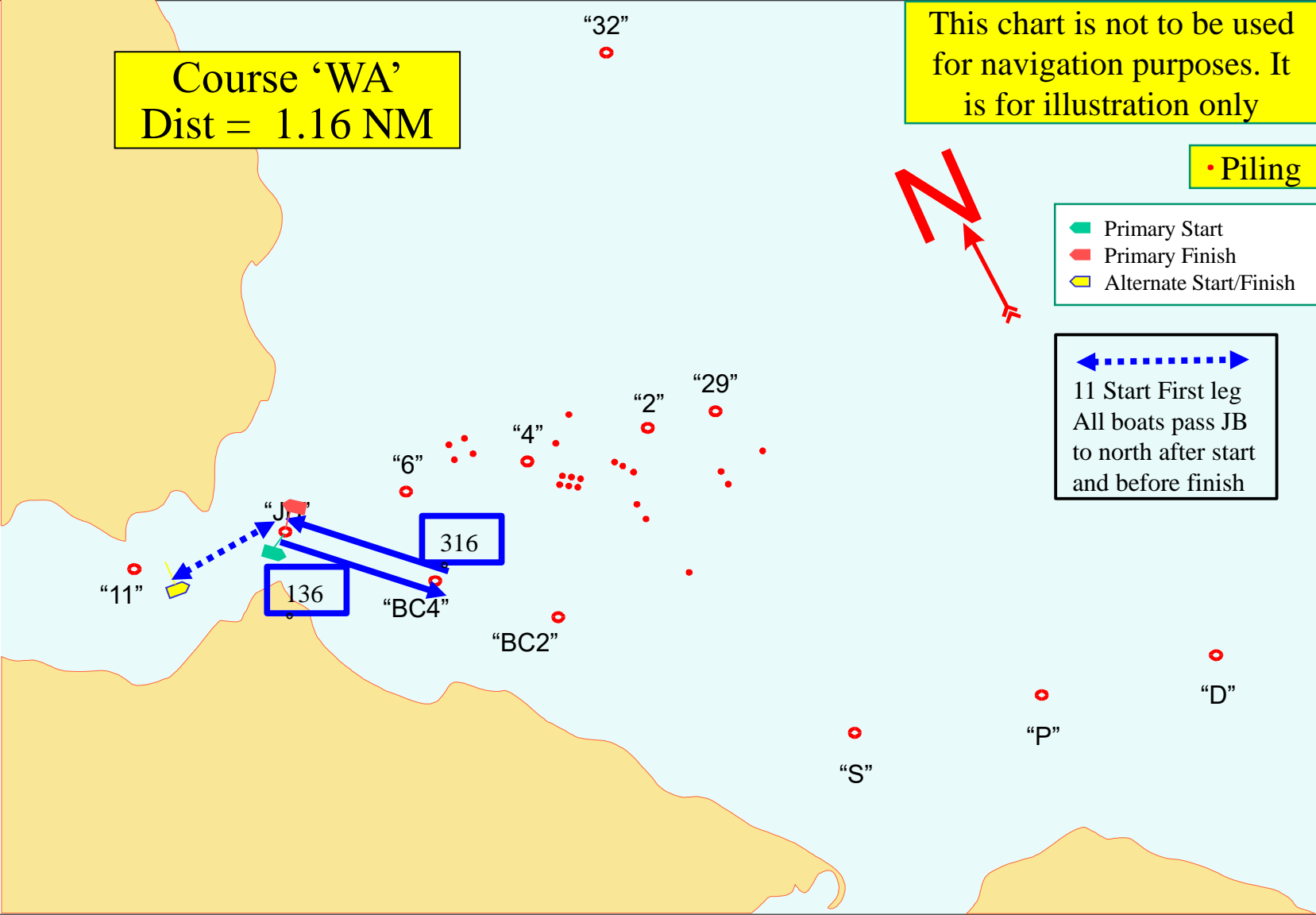
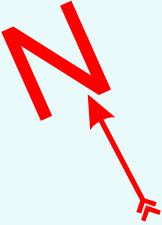
Course 'WA'  
Dist = 1.16 NM

This chart is not to be used  
for navigation purposes. It  
is for illustration only

• Piling

- Primary Start
- Primary Finish
- Alternate Start/Finish

11 Start First leg  
All boats pass JB  
to north after start  
and before finish



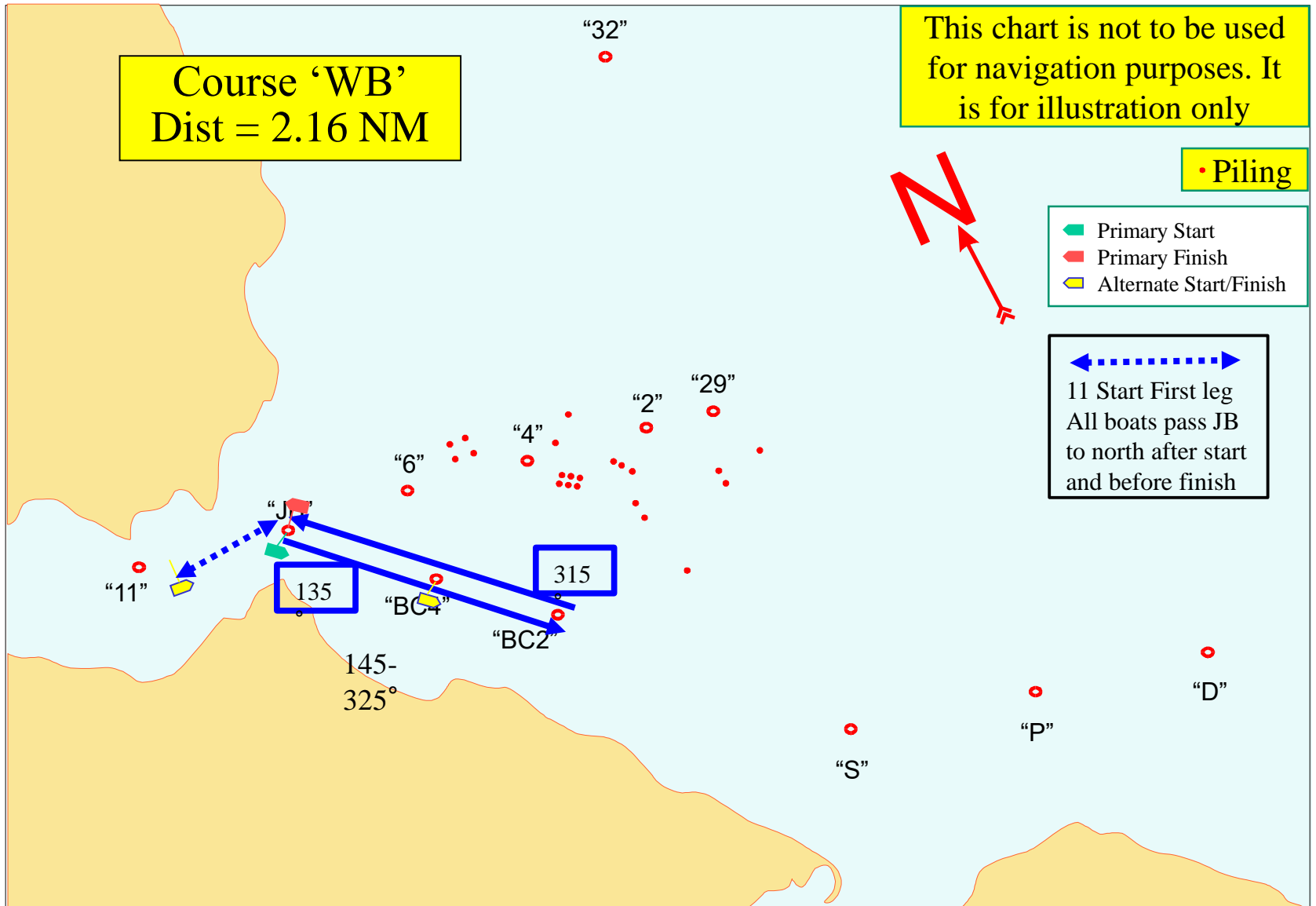
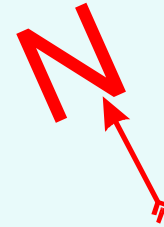
Course 'WB'  
Dist = 2.16 NM

This chart is not to be used  
for navigation purposes. It  
is for illustration only

• Piling

- Primary Start
- Primary Finish
- Alternate Start/Finish

11 Start First leg  
All boats pass JB  
to north after start  
and before finish



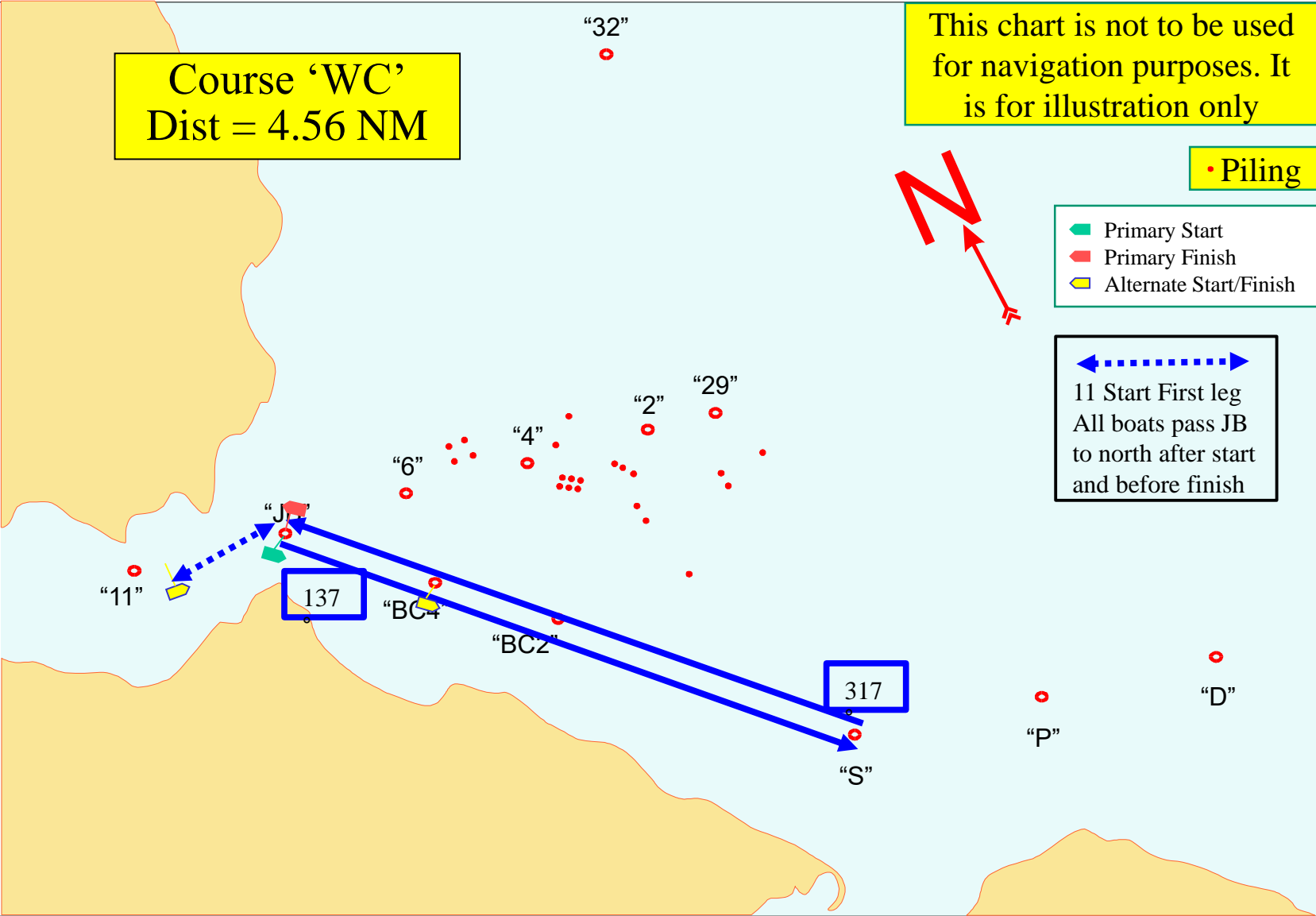
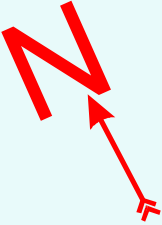
Course 'WC'  
Dist = 4.56 NM

This chart is not to be used  
for navigation purposes. It  
is for illustration only

• Piling

- Primary Start
- Primary Finish
- Alternate Start/Finish

11 Start First leg  
All boats pass JB  
to north after start  
and before finish



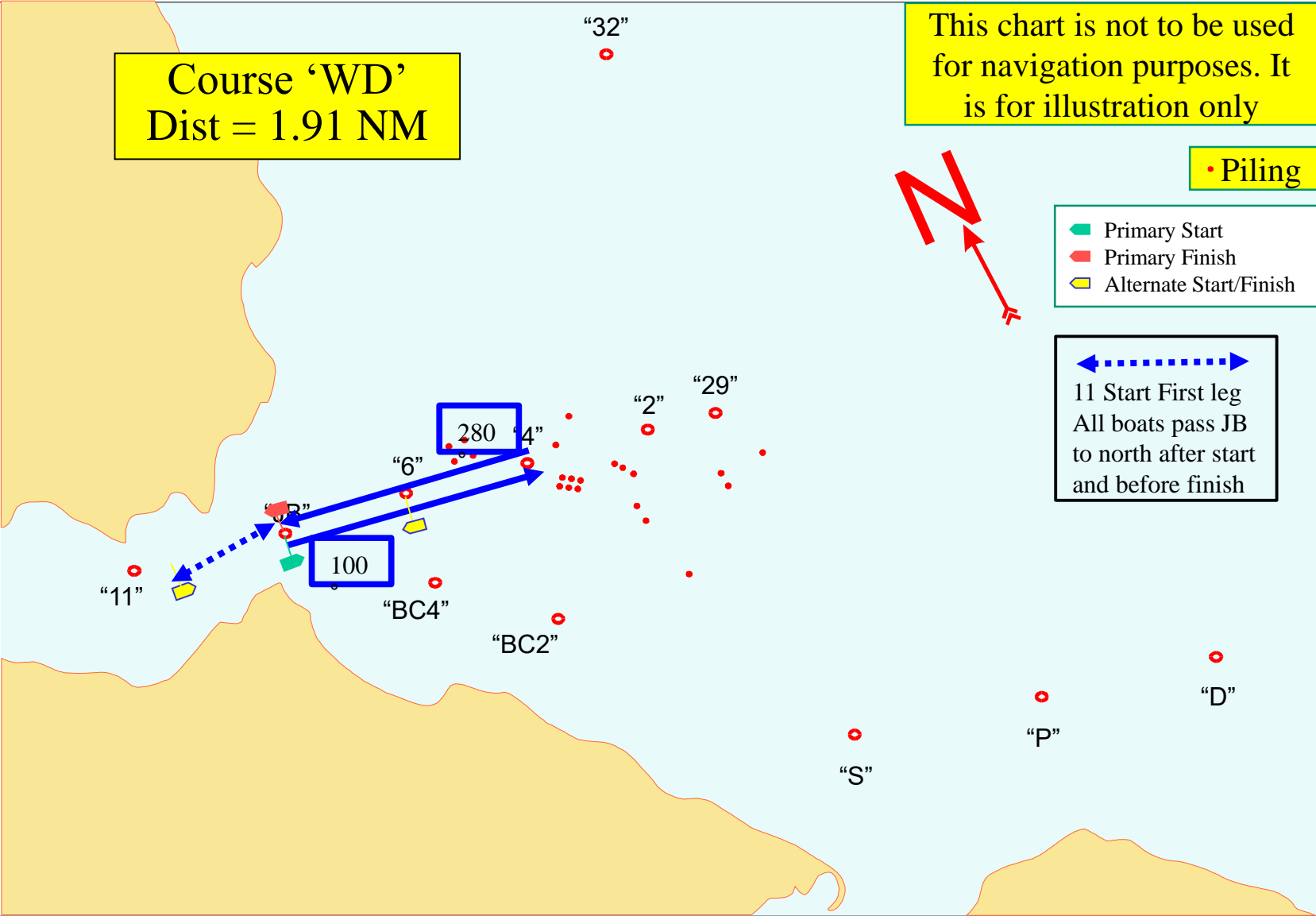
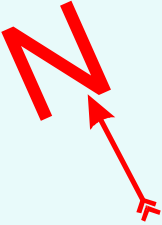
Course 'WD'  
Dist = 1.91 NM

This chart is not to be used  
for navigation purposes. It  
is for illustration only

• Piling

- Primary Start
- Primary Finish
- Alternate Start/Finish

11 Start First leg  
All boats pass JB  
to north after start  
and before finish



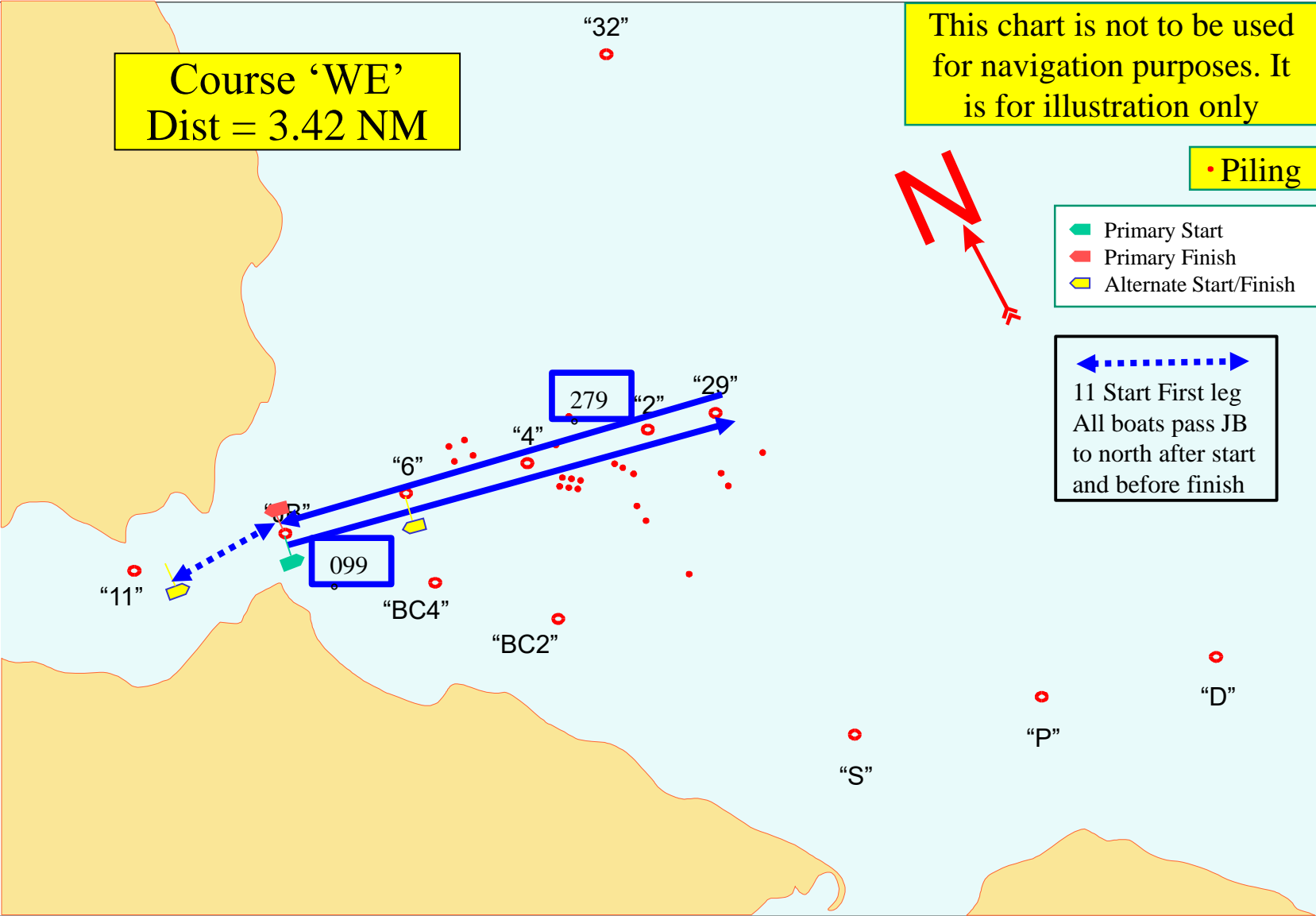
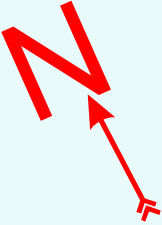
Course 'WE'  
Dist = 3.42 NM

This chart is not to be used  
for navigation purposes. It  
is for illustration only

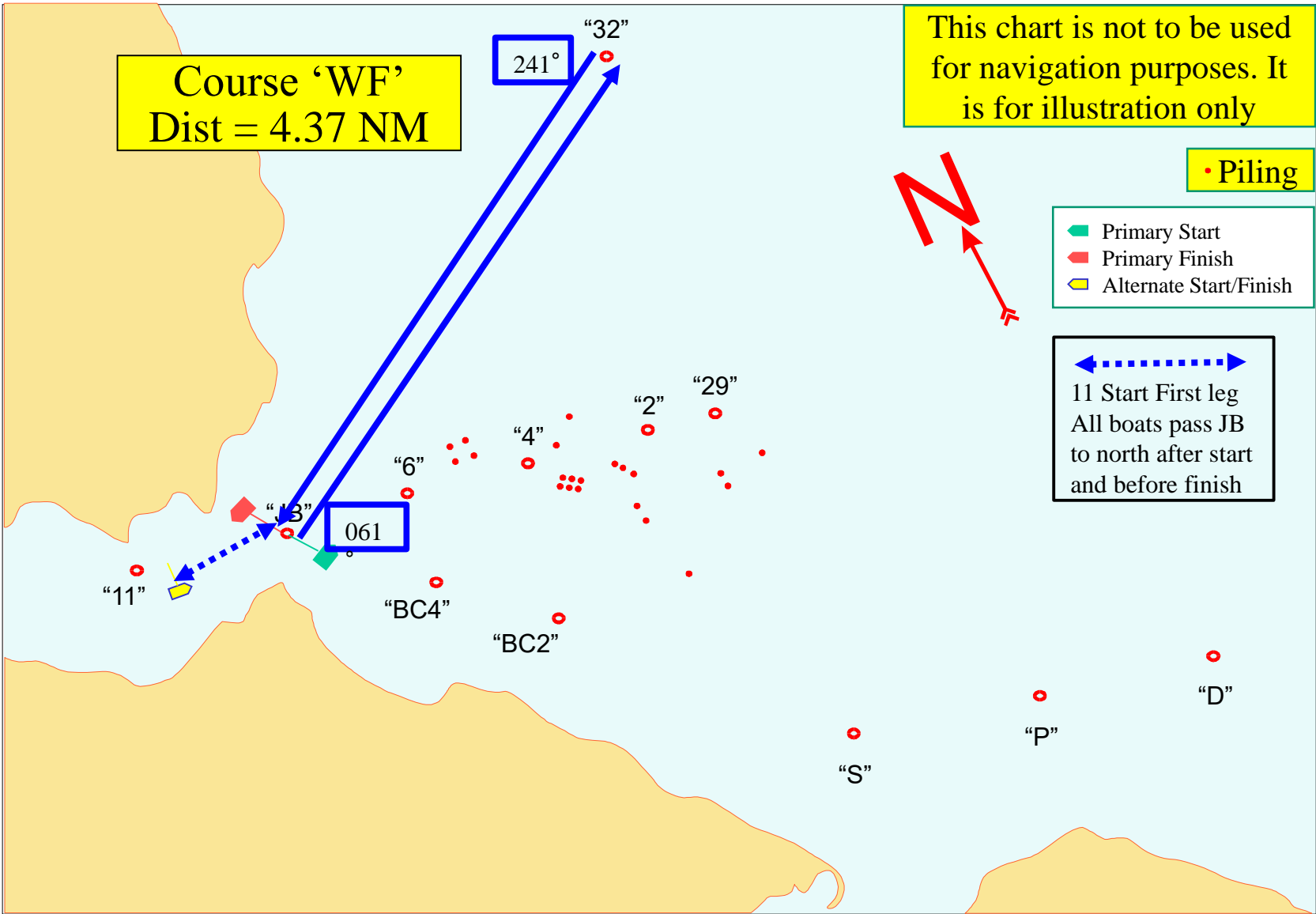
• Piling

- Primary Start
- Primary Finish
- Alternate Start/Finish

11 Start First leg  
All boats pass JB  
to north after start  
and before finish







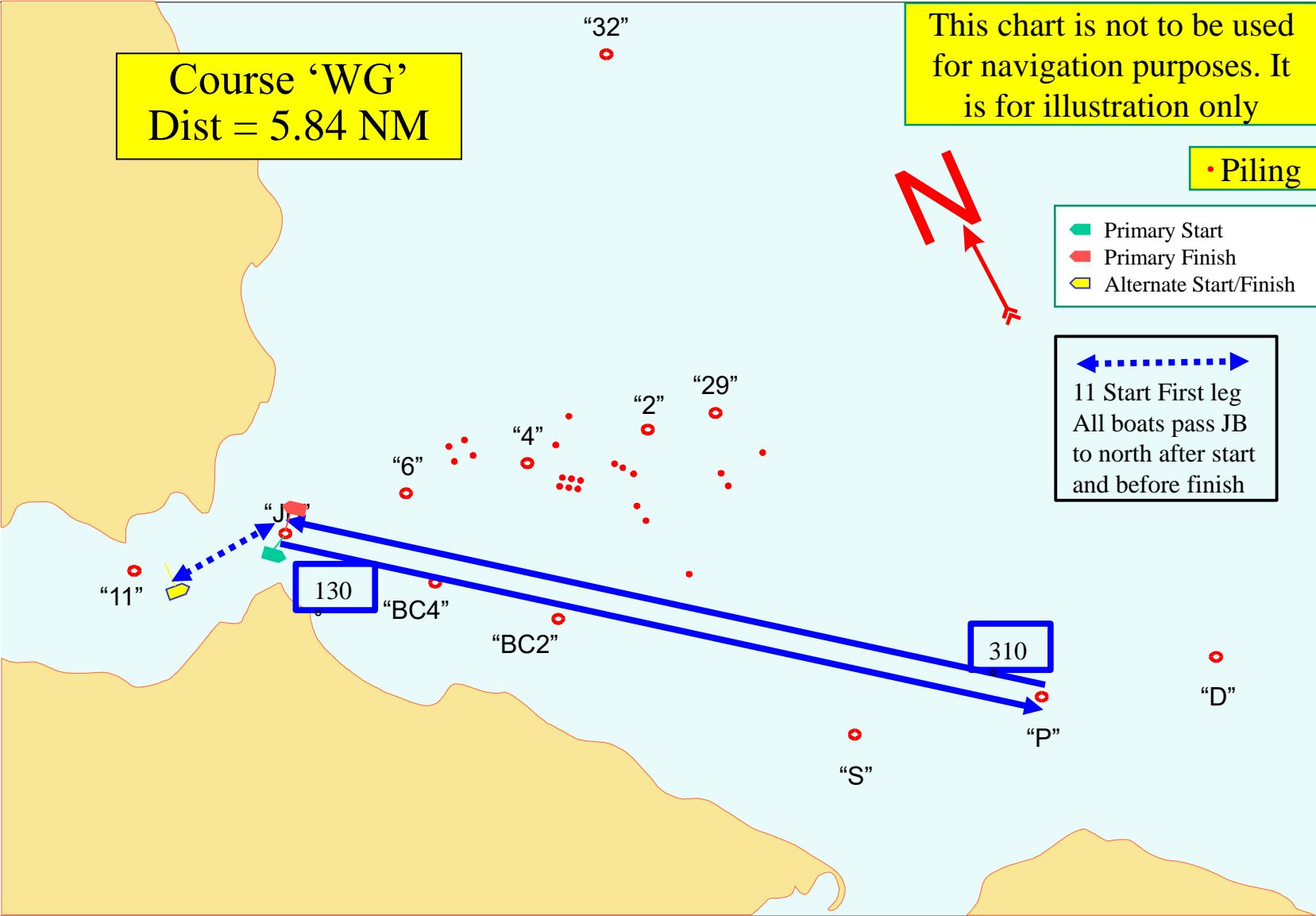
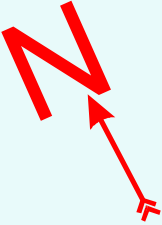
Course 'WG'  
Dist = 5.84 NM

This chart is not to be used  
for navigation purposes. It  
is for illustration only

• Piling

- Primary Start
- Primary Finish
- Alternate Start/Finish

11 Start First leg  
All boats pass JB  
to north after start  
and before finish



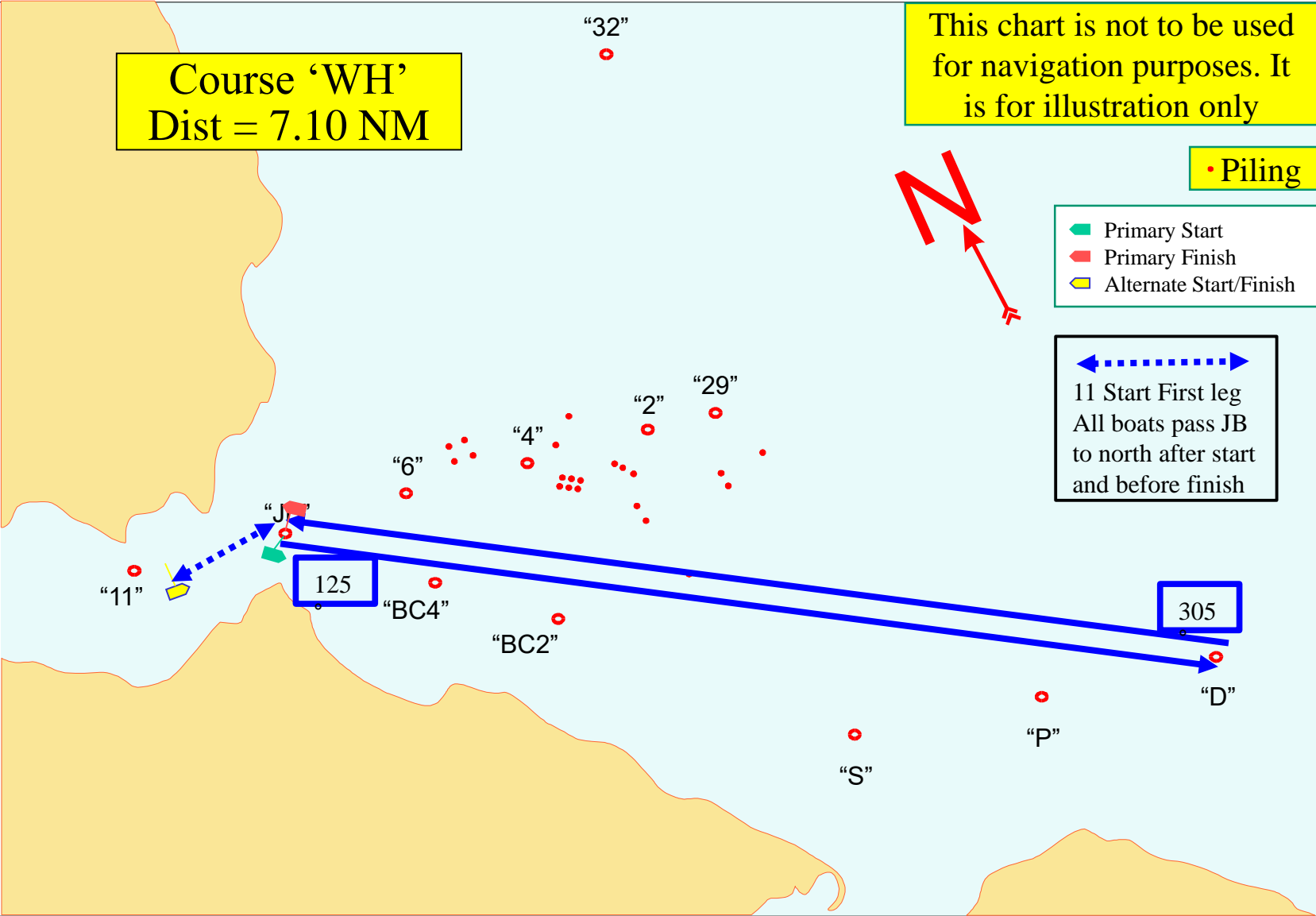
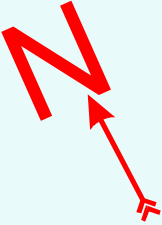
Course 'WH'  
Dist = 7.10 NM

This chart is not to be used  
for navigation purposes. It  
is for illustration only

• Piling

- Primary Start
- Primary Finish
- Alternate Start/Finish

11 Start First leg  
All boats pass JB  
to north after start  
and before finish



125

305

"11"

"J"

"6"

"4"

"2"

"29"

"BC4"

"BC2"

"S"

"P"

"D"